



DHC

MULTI-POINT INSTANT HIGH PRESSURE WATER HEATER.

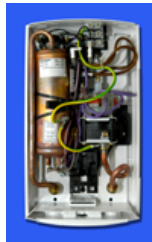
STIEBEL ELTRON



The DHC range of Hydraulic controlled pressurised compact instantaneous water heaters, with copper-sheathed heating element, is designed for applications, where space is limited. Regardless of whether it is installed in the shower cubicle or under the sink, the DHC always makes sure that you will get hot water when you need it.

When installed near the point of use, the DHC will supply hot water immediately and in the exact quantity that is required.

The DH series can be connected to more than one outlet. The units are very compact and easy to install. Simply turn on your tap and you will get unlimited hot water. No more need for that unsightly storage water heater that eats up your valuable space in the bathroom.



BENEFITS IN BRIEF

- High grade Stiebel Eltron brand quality.
- Multipoint : Can feed more than one outlet, i.e. shower & basin or two basins.
- Hot water at anytime.
- Quick and easy to install.
- Neat, slim design - compact size, can be sited anywhere.
- Safety thermal cut-out.
- Heats up incoming water temperature by a further 36°C (6kW) & the 8kW can further boost incoming temperature by 42°C.
- Different Heating capacities: Available in 6kW & 8kW - 220...240V.
- Above (DHC) and below (DHC..U) installation.
- Low energy consumption.
- VDE/GS approved.
- Appliance with Copper Tubular Element.
- Recessed pipework & Surface pipework.
- Closed (Pressurised) Instantaneous Water Heater
- The DHA 4/8 model is an addition to our range, the connected load, is selected at the time of installation. The user can reduce the loading by 2.2kW by adjusting the dial on the front panel. (i.e. for summer temp.)

Output Temperature's

The temperature output of the Water Heater can be calculated by using the table below; Add the incoming cold water temperature to the temperature increase at the flow rate indicated. (e.g. DHC8 - "Winter" inlet temp.= 10°C & @ 4L/min you will get a 32°C rise in temperature, Add 10°C + 32°C = 42°C)

- 1 Hot water connection DHC.U
 - 2 Cold water connection DHC.U
 - 3 Hot water connection, DHC, concealed
 - 4 Cold water connection, DHC, concealed
 - 5 Hot water connection, DHC, above work surface
 - 6 Cold water connection, DHC, above work surface
 - 7 DHC 6 U electrical connection cable to be provided by client.
 - 8 Electrical connection concealed (DHC)
 - 9 Electrical connection above work surface (DHC)
 - 10, 11 Securing holes
- *All dimensions in mm.

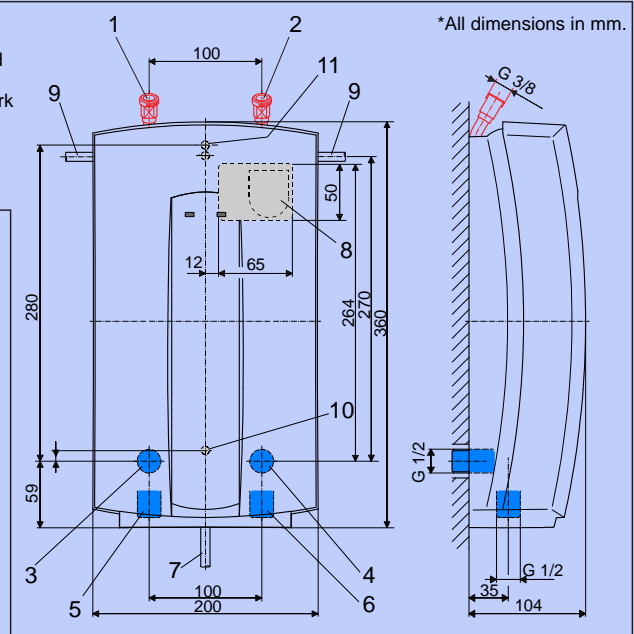
Temperature Increase from cold water inlet

Type	Power *	Litres per minute (l/min)									
		1,6	2,0	2,6	3,0	3,6	4,0	5,0	6,0	8,0	10,0
DHA	4,4kW	39°C	32°C	24°C	21°C	18°C	16°C	14°C	11°C	8°C	6°C
DHC 6 U	6,6kW	-	-	36°C	32°C	28°C	24°C	20°C	16°C	12°C	10°C
DHC 6	6,6kW	-	-	36°C	32°C	28°C	24°C	20°C	16°C	12°C	10°C
DHC 8	8,8kW	-	-	-	42°C	38°C	32°C	27°C	21°C	16°C	13°C

* 230v Volt supply

Electrical Connection - (1/N/PE ~ 220...240 V) 40amp breaker @ main board.

The DHC comes in two different kW ratings ;
6kW - 220...230...240 V = 28...29...30amp, 6.0...6.6...7.2kW, Cable Size: 6mm²
8kW - 220...230...240 V = 37...39...40amp, 8.0...8.8...9.6kW, Cable Size: 10mm²



For any further info on any "Stiebel Eltron" product please call Grant Mocke on 083 3389106

www.stiebel-eltron.co.za

Stiebel Eltron South Africa Agencies (Pty) Ltd, Unit No.9 Selby Warehouse Complex, Krag Street corner Treu, Selby Ext 14, Johannesburg - P.O.Box 38875, Booyens 2016. Tel:(011) 493-6910/1/2/3/4, Fax:(011) 493-2709