

The CNS panel heater is suitable for domestic and commercial use. The heater features **TUBULAR HEATING ELEMENTS MADE OF STAINLESS STEEL, SLIMLINE METAL HOUSING, DOUBLE INSULATION**, frost protection setting. **THE HEAT IS BEING DISTRIBUTED SILENTLY BY NATURAL AIR CIRCULATION.**

The appliance incorporates a safety - thermal cut out, to prevent overheating and a thermostat with the option of restricting the temperature range.

Protection type: Splash-Proof (IP24).

To work out what size unit for what sized room, use this simple equation -

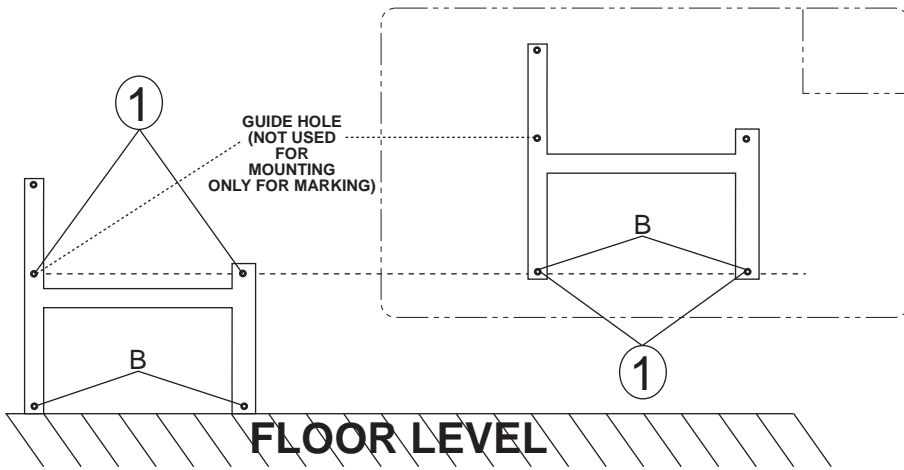
1 KW	=	10 square meters	---	CNS 100
1.5 KW	=	15 square meters	---	CNS 150
2 KW	=	20 square meters	---	CNS 200
2.5 KW	=	25 square meters	---	CNS 250

N.B. - The convector heater must not be mounted immediately below a wall socket, or any shelves, (it could melt electrical plug socket and cause a fire.)

- When the unit is first turned on it might give off a smell as the element is burning off factory coating and dust. This is no cause for alarm, Ensure that room is ventilated (for example = open a window)

HOW TO WALL MOUNT BRACKET

USE THE WALL MOUNTING BRACKET AS A TEMPLATE FOR POSITIONING THE HEATER CORRECTLY AND PROVIDING THE CORRECT DISTANCE FROM FLOOR.



STEP 1 → STEP 2

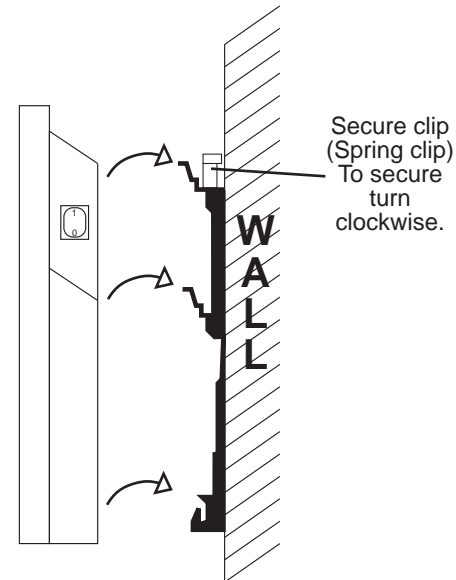
PLACE BRACKET ON FLOOR LEVEL. WITH MARKER, MARK OFF HOLES AT NO. 1. (MAKE SURE IT IS LEVEL AS SOME FLOORS OR SKIRTING BOARDS ARE SKEW)

MOVE BRACKET UP AND LINE UP HOLES (B) TOO THE MARKED HOLES ON WALL AT NO. 1. THEN MARK OFF UPPER HOLES IN BRACKET. DRILL THE FOUR HOLES, INSERT PLUGS AND SCREW THE WALL MOUNTING BRACKET SECURELY TO THE WALL. (SCREWS & PLUGS NOT PROVIDED).

ELECTRICAL CONNECTION

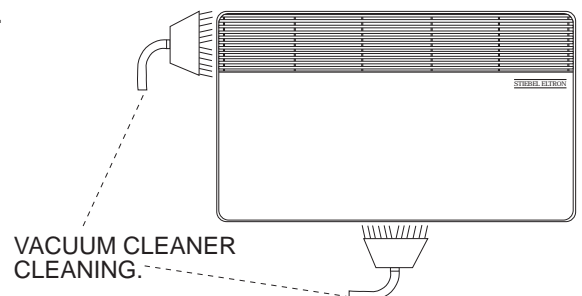
The convector heater is supplied with electrical lead. The heater is for 230V AC. The voltage supply must match the requirements on the rating plate. The supply cable must be correctly sized. **THE HEATER MUST BE CONNECTED TO A SOCKET OUTLET (PLUG) OR PERMANENT TERMINAL BOX (ISOLATOR SWITCH) AT LEAST 10cm TO ONE SIDE OF HEATER (DO NOT POSITION PLUG OR ISOLATOR ABOVE OR BELOW HEATER, AS THE HEATER COULD MELT THE PLUG OR ISOLATOR SWITCH, DUE TO THE HEAT PRODUCED BY UNIT).**

HOW TO ATTACH HEATER TO MOUNTING BRACKET



On the back side of the convector there are 4 slots, these should be hooked onto the wall bracket and pushed down. The spring clips should be turned clockwise to secure. To remove the convector reverse the above operation.

CLEANING UNIT



DO NOT USE ABRASIVE OR AGGRESSIVE CLEANERS TO CLEAN THE HEATER. USE A VACUUM CLEANER ONCE A YEAR (DEPENDING ON HOW DIRTY YOUR ENVIRONMENT IS ?) TO CLEAN THE UPPER AND LOWER AIR GRIDS.